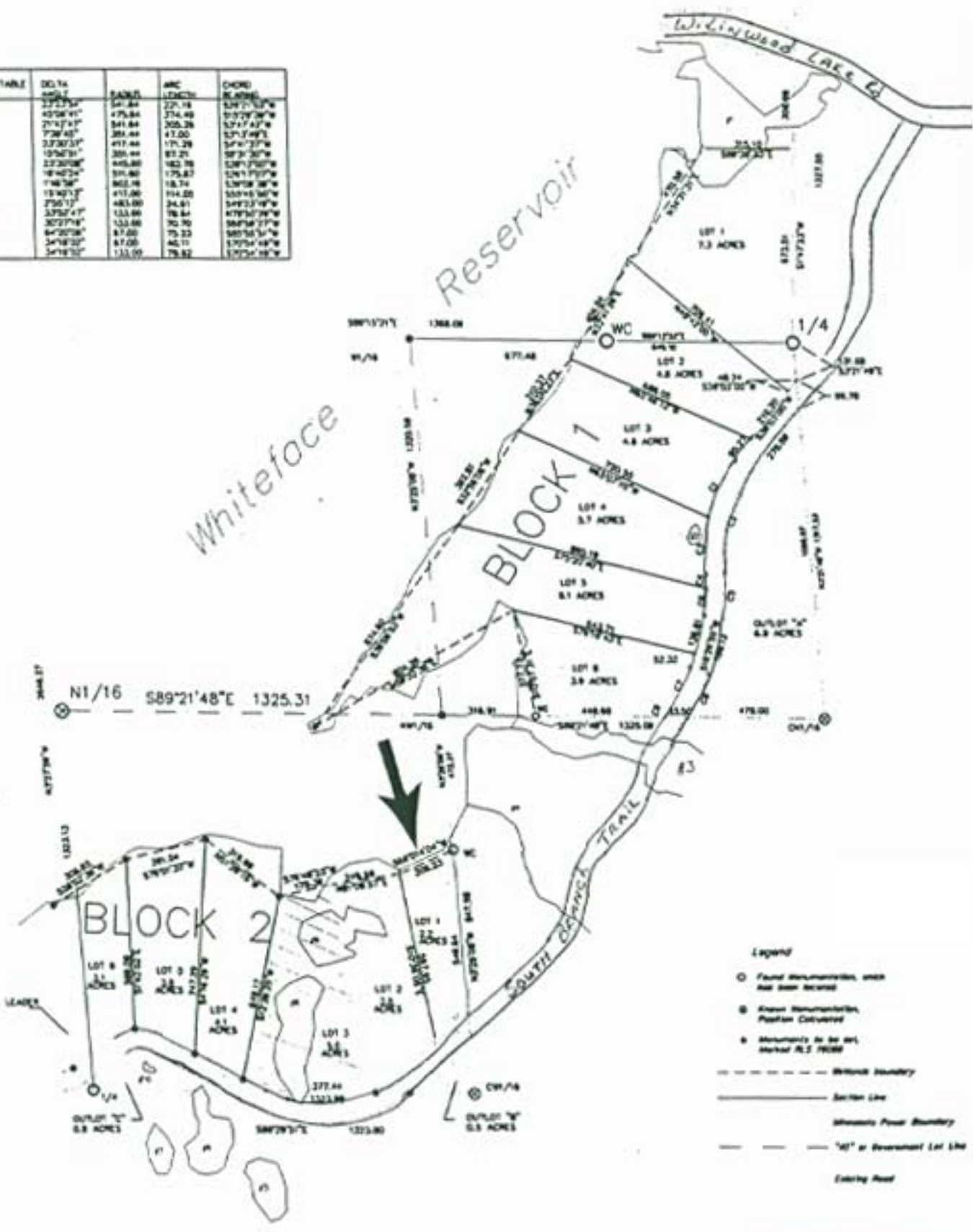


*Preliminary Plat for Minnesota Power
in Parts of Sections 28, 29, 32 & 33,
Township 56 North, Range 14 West
St. Louis County, Minnesota*

Readings are based upon DTM North,
State Plane Coordinate System (NAD 83)
Minnesota North Zone

CHORD CORN	ANGLE	DETA SPLIT	SACRE	ARC LENGTH	CHORD BLANK
00	27°23'51"	547.84	227.18	527°12'36"W	
01	49°28'41"	475.84	374.49	51°27'36"W	
02	71°17'51"	341.84	305.26	57°17'42"W	
03	73°48'51"	281.84	17.00	57°17'42"W	
04	33°30'31"	411.84	171.29	57°17'42"W	
05	10°20'31"	301.84	87.27	57°17'42"W	
06	22°20'36"	445.80	182.76	52°17'00"W	
07	18°40'34"	511.80	175.87	52°17'00"W	
08	14°30'34"	601.76	18.74	52°17'00"W	
09	13°40'37"	411.80	114.00	55°14'30"W	
10	7°30'17"	481.80	34.41	54°22'18"W	
11	33°30'47"	331.80	78.44	47°26'30"W	
12	30°27'14"	331.80	70.70	54°26'12"W	
13	64°20'28"	47.00	75.33	58°26'34"W	
14	34°18'32"	47.00	46.11	57°26'48"W	
15	34°18'32"	131.00	78.82	57°26'48"W	



- Legend**
- Found Monuments, when Not Seen Located
 - Known Monuments, Platfile Covered
 - Monuments to be set, Marker M.S. 7000
 - - - - - Block Boundary
 - Section Line
 - Minnesota Power Boundary
 - 1/4 or Government 1st Line
 - Existing Road

Northern Lights Surveying & Mapping, Inc.
P.O. Box 268
Shelburne, Minnesota 55708
Phone/Fax: (718) 263-8000
Email: nls@earthlink.net

